



















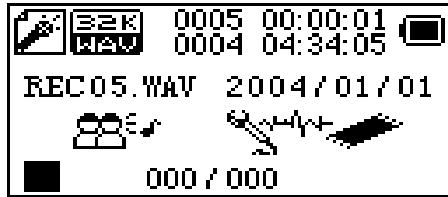






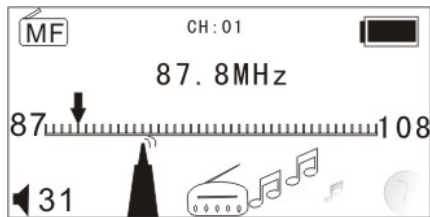
## Voice Recorder

## Play Voice



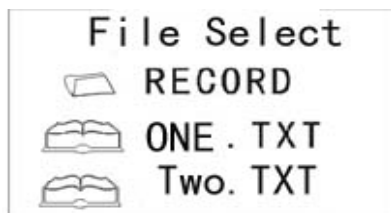
## FM Radio

## System



## eDocuments

## Phonebook



- **Connecting player to a computer and enter USB mode:**
- **Volume adjustment:**  
Press VOL to enter volume adjustment mode and then short press NEXT/ PREV to increase or decrease the volume.

- **Turn Player ON or OFF:**

Long press PLAY to turn player ON, when the player is off (ON/OFF switch must be in ON position)

Long press PLAY to turn player OFF, when the player is on

- **Play or Stop (pause when in recording) and Exit from the sub-menu:**

Short press PLAY in music play mode to start playing the song.

While music is playing, short press PLAY to pause playing, and long press PLAY to stop playing music

- **Start Recording (short press) / Stop Recording:**

Short press PLAY to stop recording in recording state.

Long press PLAY to exit and save the recorded files

## BUTTONS OPERATIONS

- Button definitions
  1. **PLAY:** Turn Player ON, OFF, Play, Pause & Stop, and Fast Exit from the Menus
  2. **MODE:** Bring up the Menus and confirm selections
  3. **VOL:** Switch to volume adjustment mode
  4. **NEXT:** Next file/menu selection, Fast Forward, Volume increase (after switching to Volume mode)
  - 5 **PRE:** Previous file/menu selection, Fast Rewind, Lower the Volume (after switching to Volume mode)
  - 6 **USB:** USB port
  - 7 Earphone Jack
  8. ON/OFF Power Switch
    - **Definition of button operations:**

Button operations include, Short Press, Long Press, and Press & Hold.

      1. **Short press:** Result is achieved as soon as the button is pressed
      2. **Long press:** Press the button for more than a couple of seconds to achieve desired result
      3. **Press:** Result is achieved when the

button is released after pressing it

4. **Hold:** Keep holding the key until the desired result is achieved, e.g. keep holding the PREV/NEXT keys for Fast Rewind/Fast Forward

### **MUSIC (Play stored MP3 files)**



- Simple operation
  1. Plug the earphones into the earphone jack.
  2. Long press PLAY to turn on the player, Press MODE button to select Music option and then short press PLAY button to play music file.
  3. Selecting music files:  
PRE -> select previous music file  
NEXT-> select next music file
  4. Volume Control:  
Short press VOL button, then press PRE to decrease volume or NEXT to increase volume
- **Equalizer**  
In the Music playing  
Mode

1. Short press MODE to enter Music sub-menu.
2. Press NEXT to select “Equalizer”
3. Short press MODE to confirm selection and enter “Equalizer” sub-menu.
5. EQ selection is as follows:

|           |
|-----------|
| Natural   |
| Rock      |
| Pop       |
| Classical |
| Soft      |
| Jazz      |
| DBB       |

6. Press NEXT to select and short press Mode to confirm

- **Lyrics synchronization**

The player supports \*.lrc lyric files to display synchronized lyrics. If lyric file is found, the “” icon is replaced by “” icon.



NOTE: lyrics file must have the same name as the song file e.g. if song file's name is my Love.mp3 then the lyrics file must be named my Love.lrc

If lyrics file on the player matches the song, the lyrics will be displayed automatically without pressing any buttons.

**NOTE:** In case lyrics file is found but lyrics are not displayed, press Mode button to display lyrics.

## RECORD (Voice Recording)



Make sure the battery has enough power when recording. The

player supports up to 99 voice files per catalog / folder.

1. Long press MODE button for the Main Menu
2. Press NEXT button to select Record
3. Short press MODE to enter recording mode.
4. Short press PLAY to start recording.

! While recording, short pressing PLAY will pause recording; then long pressing PLAY will stop recording and save the recorded file and then short pressing MODE will exit from the recording mode.

Or as an alternate, while recording long pressing MODE saves the file and exit from the recording mode.

! Only PLAY and MODE buttons work during recording.

- **Select recording quality**

1. In recording mode, while recording is paused, short press Mode to display recording sub-menu.

2. Press NEXT button to select

Recording type

3. Short press Mode to confirm selection

|                     |  |
|---------------------|--|
| Fine Recording      | WAV format<br>Good sound quality           |
| Long-time Recording | WAV format<br>Normal sound quality         |
| Super Recording.    | ACT format<br>High bit rate recording file |

4. Press Play to start recording.

### **VOICE (Playback recorded voice files)**

1. Long press MODE button to display Main Menu

2. Press NEXT to select VOICE

3. The player enters Voice mode and play the recorded voice files directly without pressing PLAY.

Selecting recorded voice file

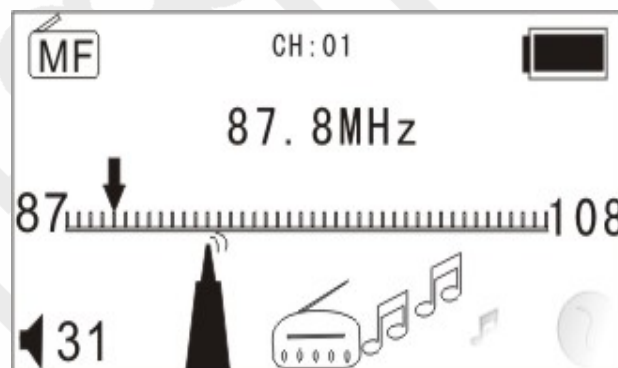
PREV: select previous file

NEXT: select next file

5. Volume Control: press VOL to enter volume adjustment mode, then short press NEXT to increase volume or short press PREV to decrease volume.

## **FM RADIO**

1. Entry Main Menu
2. Push Next Choosing "MF Mode"
3. Press mode to enter Radio mode



### ***Automatic Channel Scan***

Hold Last/Next for one second to start the channel search in "100KHz" increments; to stop tuning push Last/Next

### ***Manual Tuning***

Push Last once to decrease frequency 100

KHz

Push Next once to increase frequency 100

KHz

### ***Save Channel***

Press Mode to access FM submenu and press

Mode again to save a channel

To select a saved channel Press Play

### ***Radio Recording***

To record a radio channel, while listening to radio:

- a. Press Mode to enter MF submenu.
- b. Choosing fine record or longtime record - current radio program will start getting recorded
- c. Press and hold Mode to exit from recording mode

### ***Volume control***

Push VOL to access Volume Control, Press

Next/Last to change volume level

## **SYSTEM (Change player's settings)**

1. Long press MODE button to display Main Menu.

2, Press NEXT

to select

“System”

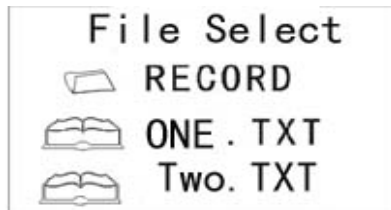
3. Short press Mode to confirm selection

- **Introduction of parameter items**

|                  |  |
|------------------|--|
| LCD Set          | Set screen backlight and contrast  |
| Language         | Choice of 19 different languages   |
| Power Off        | Set auto shut off time due to inactivity – time can be set from 0-60 seconds - set time to 0 to disable auto power off |
| Memory Info      | Shows Total and free memory on the player  |
| Firmware Version | Displays the firmware version of the player  |
| Exit             | Exit from the menu   |

**NOTE:** Short pressing PLAY can fast exit the menu.

## E-DOCUMENT



Use this option to read text files stored on the player's memory.

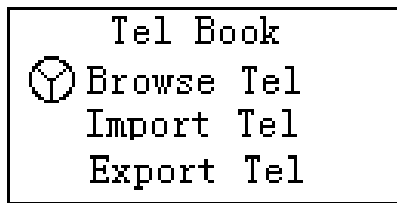
1. Long press MODE button to display Main Menu
2. Press NEXT to select e-Document
3. Short press Mode to enter e-Document mode and displays stored text files.
4. Press NEXT/PREV to select a file, and short press Play to display the file.

**NOTE:** If the text file is in a folder other than the root folder then press NEXT or PREV to select the folder, which contains the file you want to read, and Short press PLAY to open that folder.

**NOTE:** When reading files, if the player is in "Manual play" state, you should Press NEXT or PREV to turn over the pages. If it's in "Auto

play” state, it will turn over pages automatically.

## TELEPHONE BOOK



Finding telephone information?

1. Long press MODE button to display Main Menu
2. Press NEXT to select Telephone Book
3. Press **Play** to enter Telephone book mode.

Detail of the submenu lists below:

|             |
|-------------|
| File Select |
| RECORD      |
| TEL CSV     |

- a. Push **NEXT** to choose Browse TEL and press **Play** to make the selection.
- b. Push **NEXT** to scroll to the select a phone book entry



c. Press **Mode** to exit.

Browse TEL:

Check the imported contacts, including Name, E-mail, Mobile, QQ, Telephone, Fax etc.

NOTE: If there is no telephone file on the player a warning message “No File!” will be displayed

Press and hold **MODE** to exit

**Import Tel File:** Use this option to Import Telephone book file from PC to the player.

**Export Tel File:** Export Telephone book file from the player to PC

## **USB DISK**

The player can be used as a standard USB disk, supports the following operating systems:

Windows 98 (need driver installation),

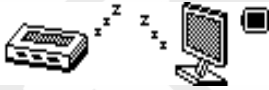
Windows 2000/ME, XP, Vista (Don't need

driver installation), Mac OS 10.3, Linux,

Redhat 8.0, and above.

The player also supports USB charge, and it can be used while it's getting charged (in waiting mode, short press Mode to exit to the Main menu and use the player.

The player displays the following three modes during it's connected to the computer:

|   |                    |
|---|--------------------|
| 1.Waiting mode<br> | 2.File downloading |
| 3. File uploading   |                    |

**NOTE:** In USB Disk mode the player's memory appears as Removable Disk under computer's File Manager (Windows Explorer or Finder). You can drag and drop supported files from your computer's hard drive to removable disk.

### **UPGRADE PLAYER'S FIRMWARE**

The firmware on this player is user upgradeable. Please email [help@hittusa.com](mailto:help@hittusa.com) to check if new firmware is available. If new firmware is available it will be emailed to you with instructions to upgrade the firmware

## OTHER SETTINGS

- **Selecting folder other than root folder to select and play files**

You can put music, voice and text files into different folders on the player's memory while player is connected to the computer.

**NOTE:** The player supports up to 9 sub-folders in the ROOT

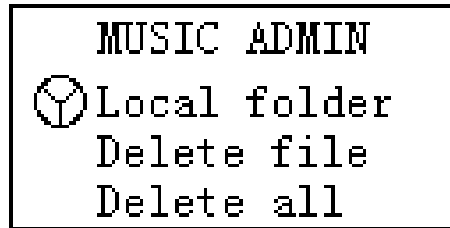
### ***Selecting different folder***

|   |   |
|---|---|
| 1. In Pause mode (take music mode for example) short press Mode to enter Music sub-menu | 2. Select Local Folder to display root folder and any sub-folders |
| 3. Press NEXT or PREV to select the folder you want to open                             | 4. Press NEXT or PRE to select the music file you want to play    |
| 5. Press Mode to confirm the selection  | 6. Press PLAY to start playing the music file                     |

Note: You can create separate folders for Music, Recording and Text files.

### ***Delete files***

In Pause mode short press Mode to enter Music sub-menu






Select “Delete File” (to delete current file) or “Delete all” files in the current folder, associated with the current Mode (Music, Voice, etc.) e.g. selecting “delete all” in music mode, will delete all music files but won’t delete recording files.



⚠ Please make sure to properly exit the player after deleting files, not doing so may not delete the files.

**Play mode**

You can select different play sub-menus in music and recording files play mode

|  |   |
|--|---|
|  Normal     | Playing music files in sequence until the end of folder |
|  Repeat One | Repeat single music file                                |
|  Repeat All | Repeat all music files                                  |

### ***Replay (A-B repeat)***

1. Setup during Music play or Voice replay
2. Short press Mode to enter Play sub-menu
3. Press NEXT to select “Replay”
4. Short press Mode to enter Replay mode
5. Press NEXT to confirm A. “A” is starting point for replay, replay icon  will start to flash, which means it is in replay setup mode and waiting for the selection of end point B
6. When ready, press NEXT to confirm B
7. Then icon  will stop flashing and will begin to replay the song continuously between A and B
8. Press NEXT to exit replay mode.

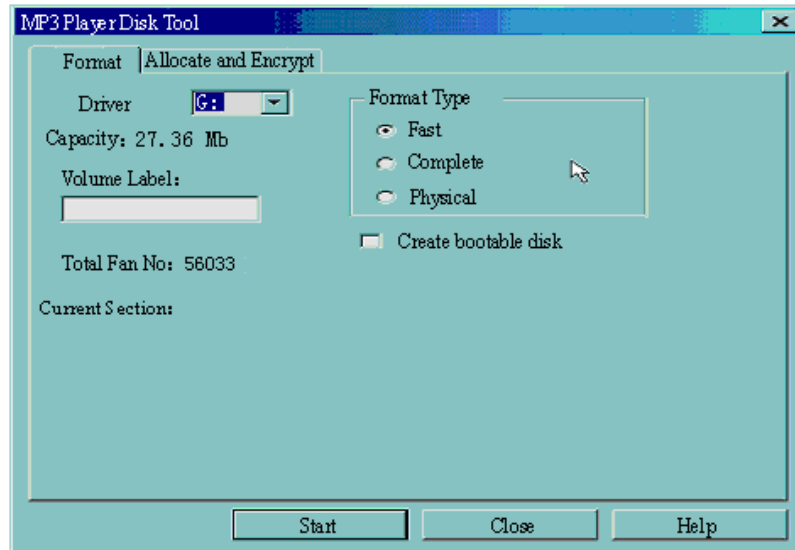
### **CREATE SECURED DATA PARTITION**

Use provided software to divide player’s memory into two partitions, and password protect one of the partitions. User can save important information in the secured partition.

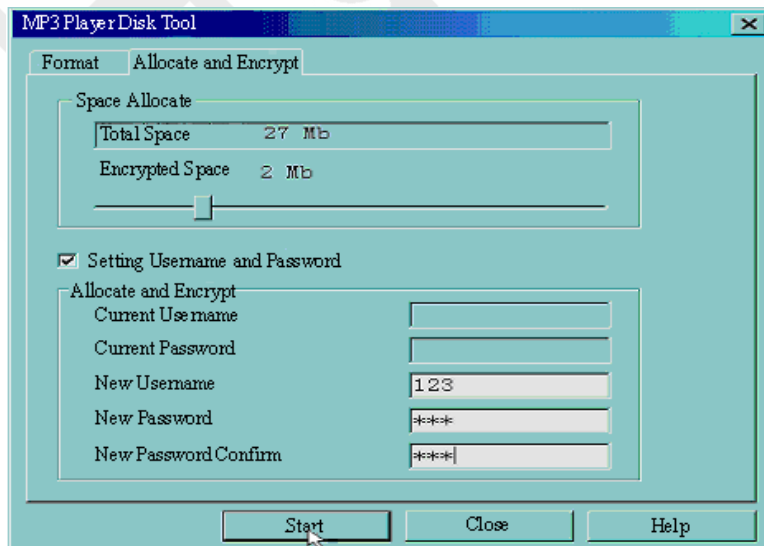
To activate Secured Partition:

1. Connect your player to PC

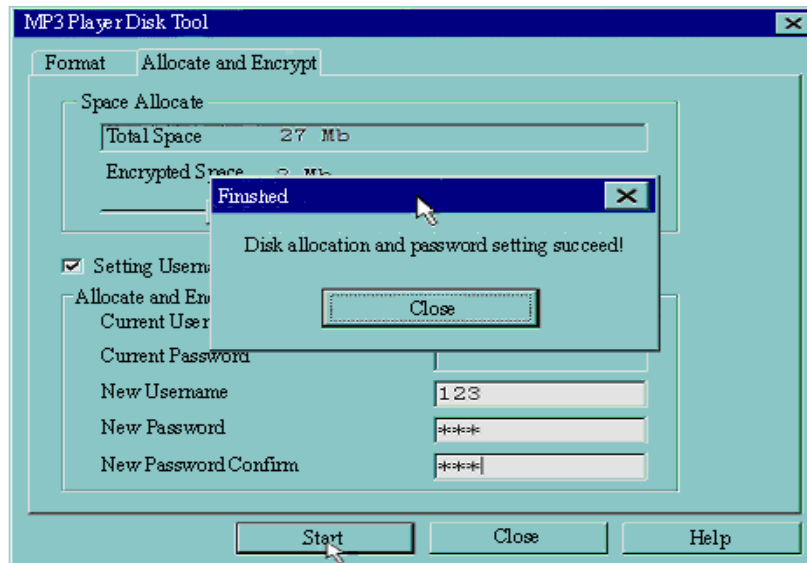
2. Run *MP3 Player Disk Tool* which can be found in provided CDROM



3. Click 'Allocation and Encrypt' card; allocate appropriate space and set username and password, and then click Start.



4. After space allocation, shown as below:

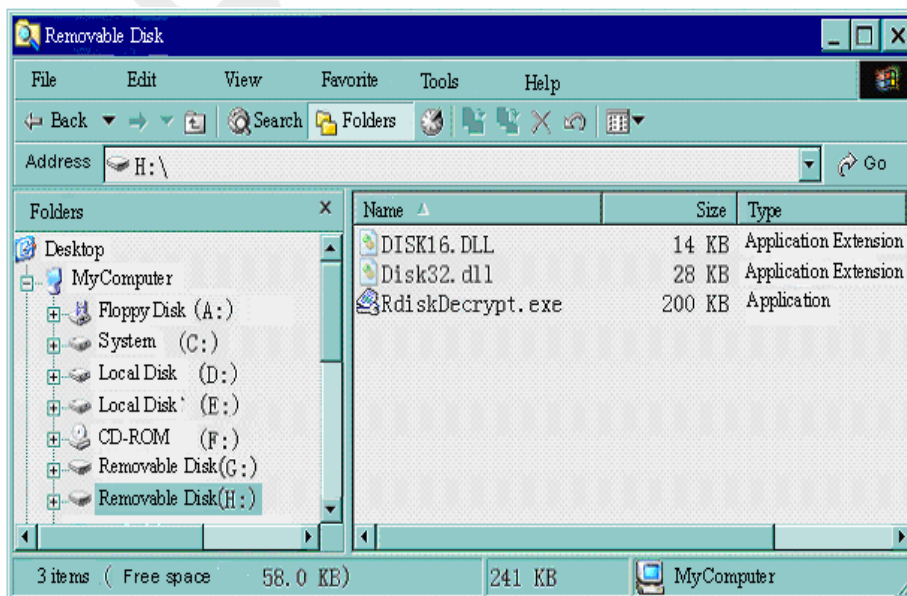


5. Click 'OK' to restart.

6. After restart, user will find two disks (only one disk can be seen on OS older than

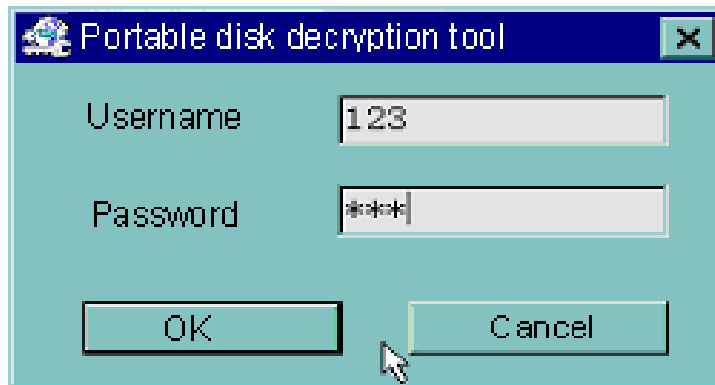
Windows 2K SP4), click the encrypted disk

(the second one), user will find three files, two are hidden and one is executable





7. Run executable file 'RdiskDecrypt.exe' and enter username and password.



8. If username and password are correct, the disk will open, and files can be copied



Warning: Creating and removing secured partition will delete all data.



Warning: Please note down username and password. In case user forgets username or password then the secured partition must be removed and recreated which will delete all data.

## TROUBLESHOOTING

|   |  |
|---|--|
| No power  | Make sure the battery is charged and ON/OFF switch is in ON position   |
| No sound in earphone  | Check to make sure the volume level is not set to "0" and the earphone is properly inserted into the earphone jack   |
| Abnormal words display on the screen  | Check if you've chosen the right language  |
| Can not download music successfully   | Check USB cable is connected properly to the computer and MP3 player. Make sure there is free space on the player's memory to store new files  |
| Some or all of the songs I downloaded cannot be seen on the player when playing songs | Make sure the songs files are in one of the supported music file formats.<br>Do not use song synchronization programs to copy songs from computer to this player. User MUST use File manager e.g. Windows Explorer® or Finder® to drag |

|  |  |
|--|--|
|  | and drop song files (in one of the supported formats) from computer to the player. |
|--|--|

## TECHNICAL SPECIFICATIONS

|              |   |                            |
|--------------|---|----------------------------|
| Screen       | 128*64 LCD screen.                        |                            |
| USB          | HDUSB2.0 read1000K Byte, write 800K Byte) |                            |
| Flash        | 128M—4GBM                                 |                            |
| Power        | Max 10 hours                              |                            |
| Recording    | Sampling Rate                             | 8KHz                       |
|              | Record format                             | WAV (32K bps)、             |
|              | Time                                      | 35hours (ACT, 128M Flash)  |
| Music        | Headset maximum output                    | (L) 10mW + (R)10mW (32Ohm) |
|              | MP3 bit rate                              | 8K bps – 320K bps          |
|              | WMA、WMV、ASF bit rate                      | 5K bps – 384K bps          |
|              | Frequency Response                        | 20Hz~20KH z                |
|              | Signal-to-Noise                           | 80dB                       |
| Music format | MP1、MP2、MP3、WMA、WMV、OGG                   |                            |
| Temperature  | -5 ~40°C                                  |                            |

|          |  |
|----------|--|
| Language | Simplified Chinese, English, Traditional Chinese, German, French, Italian, Spanish (total of 19 languages) |
| System   | Windows98/SE/ME/2K/XP/Vista/7; Mac OS 10、Linux 2.4.2   |

NOTE: Product design and specifications may change without prior notice

## LIMITED 90-DAY WARRANTY

**Coverage:** Hi-Tech Trading (USA), Inc. (“HiTT”) warrants this product (“product”) against defects in materials and workmanship under normal consumer use for 90 days from the date of purchase. HiTT, at its option, will at no charge repair, replace or refund the purchase price of this product should it not conform to this warranty. This limited warranty is a consumer’s exclusive remedy, extends only to the first consumer purchaser, is not transferable and is valid only on products purchased by consumers in the United States or Canada.

### **Exclusions:**

**Normal Wear and Tear:** Periodic maintenance, repair and replacement of parts due to normal wear and tear are excluded from coverage.

**Batteries:** Only batteries whose fully charged capacity falls below 80% of their rated capacity and batteries that leak during warranty period are covered by this limited warranty.

**Miscellaneous:** This warranty does NOT cover defects or damage that result from: (a) improper operation, storage, misuse or abuse, accident or neglect, such as physical damage (cracks, scratches, etc.)

to the surface of the Product resulting from misuse; (b) contact with liquid, water, rain, extreme humidity or heavy perspiration, sand, dirt or the like, extreme heat, or food; (c) use of the Product for commercial purposes or subjecting the Product to abnormal usage or conditions; (d) service, installation, alteration, or modification in any way by someone other than HiTT and, (e) other acts which are not the fault of HiTT.

**Obtaining Service:** To obtain service or information, please send email to **help@hittusa.com**. You will receive instructions on how to ship the Product, at your expense, to a HiTT Service Center. To obtain service, you must include a copy of your receipt.

# HE-MP44F

## COMPANY & CONTACT INFORMATION

**Hi-Tech Trading USA Inc**  
**P.O. Box 179**  
**Woodbury, NY 11797 U.S.A.**  
**Web: [www.hittusa.com](http://www.hittusa.com)**  
**Email: [help@hittusa.com](mailto:help@hittusa.com)**

ZOpid and the Stylized Logo are registered in the US Patent & Trademark Office. All other product or service names are the property of their respective owners.

**© 2010 Hi-Tech Trading USA Inc**

The information contained in this User Manual is believed to be correct at the time of printing. HiTT reserves the right to change or modify any information or specifications without notice. The contents of this User Manual are provided “as is.” Except as required by applicable law, no warranties of any kind, either express or implied, including, but not limited to, the implied warranties of merchantability and fitness for a particular purpose, are made in relation to the accuracy, reliability, or contents of this guide.