

## DIGITAL PHOTO ORNAMENT X'MAS BALL User Manual

**ZOpid®**  
HF-Z015CB



The pictures, diagrams, and certain functions described in this manual may differ from the actual product due to different models

Visit [www.hittusa.com](http://www.hittusa.com) for a revised user manual or troubleshooting tips

## PREFACE

We express our sincere thanks for purchasing this Digital Photo Ornament (DPO)!

Before operating this DPO, be sure to read this user manual carefully. After reading it, please keep it in a safe place for future reference.

We reserve the right to make changes to this DPO, Software and/or this User Manual without notice. Please visit our support website [www.hittusa.com](http://www.hittusa.com) for additional product information and/or updates.

NOTE: The pictures, diagrams and certain functions described in this manual may differ from the actual product due to different models.

## PRECAUTIONS

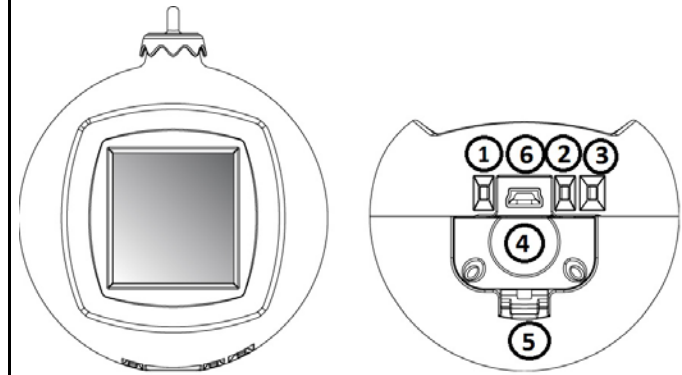
**Before operating this DPO, please read the following precautions carefully:**

- ❏ Do not operate this DPO in extremely cold, hot, dusty or damp environment
- ❏ Avoid putting this DPO under direct sunlight
- ❏ Do not scrub this DPO with a hard thing; it may result in scratches on the screen and/or damage to the hardware
- ❏ Keep this DPO and all accessories out of reach of children under the age of 3 years.

## KEY FEATURES

- ❏ 1.5" super-bright LCD display
- ❏ 100+ hours of non-stop slideshow (w/ new batteries & medium brightness setting)
- ❏ Requires 2AA batteries (not included – use alkaline batteries)
- ❏ Built-in memory for storage of up to 130 photos
- ❏ Work with Windows & Mac OSX 10.6 or older
- ❏ Power ON & OFF Timer
- ❏ Clock & date display
- ❏ Support PNG, TIFF, JPEG, GIF & BMP picture formats
- ❏ Plug-n-Play operation

## BUTTONS & INTERFACE



### Control Key

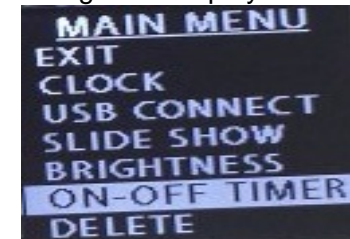
- |                             |                      |
|-----------------------------|----------------------|
| ① On / Off / Menu / Confirm | ④ Battery Door       |
| ② Forward                   | ⑤ Battery Door Latch |
| ③ Backward                  | ⑥ USB Connector      |

## GETTING STARTED

Open the battery door by pressing on the latch. Insert two pieces of AA (LR6) batteries and close the battery door. Press ① for 2 secs to power up the DPO.

To power off, simply follow the same step.

Press ① button again to display the **MAIN MENU**.



Press ② ③ to scroll through the functions in the menu.

Select a function and press ① button to set the selected function.

### CLOCK

Select "Digital Clock" or "Analog Clock" to display Date and Time. Press ② ③ to select and set the date and time. Press ① when finished.

### SET TIME MANUALLY

Select "SET CLOCK" and press ① to manually set clock.

### USB CONNECT

**IMPORTANT:** Connect the mini-DPO to computer's USB port using the supplied USB cable and to enable USB Mode Press ① to bring up Main Menu. Select "USB Connect". Select "Yes" to start the application to transfer pictures from computer to the mini-DPO.

### AUTO SYNC CLOCK FROM COMPUTER

The mini-DPO clock will automatically sync with the computer's clock when connected to it.

### SLIDE SHOW

Press ② ③ to set the On/Off slide show function and select the interval time between each slide. There are 16 options ranging from 00 to 15 seconds. Press ① button to set and confirm.

When 00 is selected, the mini-DPO will display a still photo without slide show. You have to press ② ③ buttons manually to view the photos stored in mini-DPO.



### ON – OFF TIMER

Press ② ③ to cycle through the ON TIMER and OFF TIMER hours (00 - 24), minutes (00 - 59), Press ① to confirm.

### BRIGHTNESS

Press ② ③ to select the level of screen brightness from 01 to 10. Press ① to confirm.

### DELETE

Press ② ③ to set the delete option. Choose "Delete One" to delete the photo that was displayed when you pressed ①. Choose "Delete All" to delete all photos.

\*\*\* Please disable the Slideshow function before delete photos.

### EXIT

Select Exit to display the PHOTO MODE.

### BATTERY

The mini-DPO can operate with USB power or AA batteries. Change battery when the battery indicator become shows low-level or the screen gets dim.

## WARNING

**After unplugging the mini-DPO from the PC's USB port, please wait for 10 seconds before re-plugging.**

## PHOTO TRANSFER (DPFMATE)

### Transferring Photos from the Computer to the Frame

1. This frame contains a built-in installer for the software used to transfer photos from a computer.
2. Use the supplied USB cable to connect the frame and computer.
3. Drivers install automatically when the frame connects to a computer **and USB Mode is enabled (by USB Connect option from Menu)**
4. Once all drivers install, the program launches automatically, displaying all of the images currently on the frame. Supported photo formats are JPEG, GIF and BMP.
5. Browse for image on your hard drive

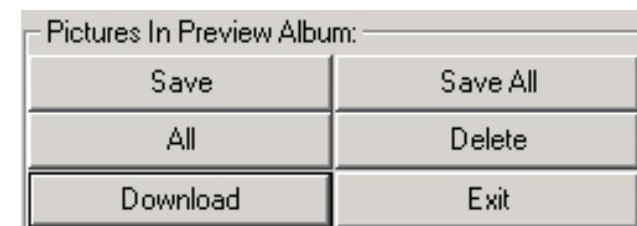


### 6. Image Option

+	Zoom In
-	Zoom Out
Clear / Rect	Crop Photo / Fit Size
Rotate L	Rotate photo to the Left
Rotate R	Rotate photo to the Right
Add	Add Photo
Setting	Change background and font colors in the Menu

### 7. Click Download to sync photos with the mini-DPO.

**IMPORTANT:** To transfer selected pictures from computer to the frame make sure to click on **DOWNLOAD**



8. Before removing mini-DPO from USB cable, make sure to Click Exit to close the DPFMate program to avoid damage to internal memory.

#### 9. Other Buttons

**Save** Save photos from mini-DPO to your hard disc

**Save All** Save all photos from mini-DPO to your hard disc

**All** Select all photos

**Delete** Delete photo

10. mini-DPO can hold up to 130 photos, the status bar shows the numbers of photos loaded into the DPO and the maximum photo storage

If photo manager does not pop up automatically (due to the autorun setting of the PC), go to My Computer, double click DPFMate CD icon and run the program manually.

**Note: For MAC user**, please unzip MacDPFMate.zip file to application folder, from one of the removable disks that appears when the mini-DPO is connected to the computer. **This application is only compatible with PowerPC Mac OSX 10.6 or older.**

### TROUBLESHOOTING TIPS

Can't see the pictures that you saved to the frame using DPFMATE	Make sure to click on "Download" after adding all the pictures to the selection using DPFMATE
Frame does not power on	Make sure you are using new set of batteries & batteries are installed properly.
Batteries do not last too long	Make sure to use alkaline batteries for long battery life

### LIMITED 90-DAY WARRANTY

Coverage: Hi-Tech Trading (USA), Inc. ("HiTT") warrants this product ("product") against defects in materials and workmanship under normal consumer use for 90 days from the date of purchase. HiTT, at its option, will at no charge repair, replace or refund the purchase price of this product should it not conform to this warranty. This limited warranty is a consumer's exclusive remedy, extends only to the first consumer purchaser, is not transferable and is valid only on products purchased by consumers in the United States or Canada.

#### EXCLUSIONS:

Normal Wear and Tear: Periodic maintenance, repair and replacement of parts due to normal wear and tear are excluded from coverage.

**Miscellaneous:** This warranty does NOT cover defects or damage that result from: (a) improper operation, storage, misuse or abuse, accident or neglect, such as physical damage (cracks, scratches, etc.) to the surface of the Product resulting from misuse;

(b) contact with liquid, water, rain, extreme humidity or heavy perspiration, sand, dirt or the like, extreme heat, or food; (c) use of the Product for commercial purposes or subjecting the Product to abnormal usage or conditions; (d) service, installation, alteration, or modification in any way by someone other than HiTT and, (e) other acts which are not the fault of HiTT.

**Obtaining Service:** To obtain service or information, please send email to [help@hittusa.com](mailto:help@hittusa.com). You will receive instructions on how to ship the product, at your expense, to a HiTT Service Center. To obtain service, you must include a copy of your receipt, receipt is not required if you registered your product on our website [www.hittusa.com](http://www.hittusa.com) within 30 days of purchase date.

### COMPANY & CONTACT INFORMATION

**Hi-Tech Trading USA Inc**  
P.O. Box 179  
Woodbury, NY 11797 U.S.A.  
Web: [www.hittusa.com](http://www.hittusa.com)  
Email: [help@hittusa.com](mailto:help@hittusa.com)

ZOpid and the Stylized Logo are registered in the US Patent & Trademark Office. All other product or service names are the property of their respective owners.

© 2013 Hi-Tech Trading USA Inc

The information contained in this User Manual is believed to be correct at the time of printing. HiTT reserves the right to change or modify any information or specifications without notice. The contents of this User Manual are provided "as is." Except as required by applicable law, no warranties of any kind, either express or implied, including, but not limited to, the implied warranties of merchantability and fitness for a particular purpose, are made in relation to the accuracy, reliability, or contents of this guide